



25 ORMOND ROAD, EAST GEELONG, 3219

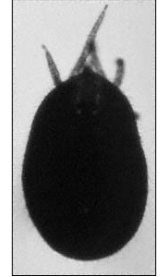


TEL: 5222 2424 FAX: 5222 2476

CONTROLLING MITE INFESTATIONS

Most keepers will encounter the reptile mite at some stage of their reptile keeping. The main danger with this parasite is the potential transmission of pathogenic organisms to the reptile through the bites of the mite. Severe infestations may result in anemia and death.

Give away signs are that your animal may be off it's food, it may sit in it's water bowl a lot, and you may actually see mites on the animal, or on your hands after you have handled the animal. The mites are usually around 1 – 2 mm in size. White spots of Mite feces may also be visible on the animal.



There are a number of effective treatments available for treating mite infestations. Reptile Mite Spray is a spray-on liquid and Top of descent is an aerosol. This caresheet is referenced around Liquid sprays.

It is important to realize that there are two aspects to mite treatment: the animal & the environment. Sprays can be used on the reptile to kill the adult mites, but a thorough disinfection of the enclosure is also required in order to avoid re-infection from the hatching out of eggs.

Mite eggs are particularly resistant to chemicals, so it is essential that the enclosure is thoroughly *scrubbed* out with a solution such as dilute bleach. It is then washed out several times with hot water to remove any remaining traces of the bleach. Wiping the enclosure out with the Mite spray itself is also an option. Enclosure furnishings that are made of wood should be discarded or baked, since the mites can burrow into and lay eggs in the wood.

Do not treat the animal with mite sprays during shedding as a fluid that contains enzymes is secreted between the old & new skin layers. The skin of the reptile is more permeable and any chemical used may be absorbed through the skin and result in increased toxicity.

Mite sprays should be sprayed thoroughly over the reptile and enclosure, do not however spray directly into mouth of the animal. This process is repeated every 5-7 days for 4 weeks, in conjunction with cleaning of the enclosure.

In summary:

- Treat the environment. Disinfect the enclosure. Scrub out the enclosure. Throw away or bake any wood furnishings. Ensure the enclosure is thoroughly rinsed out with water and aired before reptiles are returned to it.
- Treat the reptile. Weekly spraying with Mite spray. Do not place reptile in a hot confined space immediately after treatment and do not treat while the animal is shedding.
- Ensure you treat for a minimum of 4-6 weeks. *Failure of treatment is commonly due to inadequate length of treatment.* For severe infestations consult your vet.